

FLIR A6700sc

Thermal imaging camera with FLIR cooled InSb detector



HIGH SENSITIVITY, CRISP THERMAL IMAGES

FLIR A6700sc incorporates a cooled FLIR Indium Antimonide (InSb) detector that operates in the 3- to 5-micron waveband. Optionally, a broadband version that operates in the 1-5 micron waveband is available. Both versions produce crisp thermal images of 640 x 512. Achieving a high thermal sensitivity of <20 mK, FLIR A6700sc is able to capture the finest image details.

FAST INTEGRATION TIMES

Working in snapshot mode, the FLIR A6700sc is able to capture all pixels from a scene simultaneously. This is particularly important when monitoring fast moving objects where an uncooled thermal imaging camera would suffer from image blur. The camera supports image frame rates up to 480 frames per second when operating in windowing mode.

STANDARD VIDEO INTERFACES

Using a standard GigE Vision® interface to transmit full dynamic range digital video, and GenICam for camera control, the FLIR A6700sc is a true "plug and play" thermal imaging camera. Additional interfaces include a BNC analog video output. The Gigabit Ethernet and analog video are simultaneously active yet independently controlled allowing greater flexibility for recording and display purposes.

CUSTOM COLD FILTERS AVAILABLE

Custom cold filtering options for specific spectral detection and measurement are available. Perfect for imaging through glass, measuring temperature of thin film plastics, laser profiling and detection, or optical gas imaging

SOFTWARE

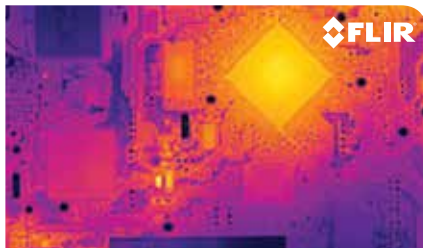
FLIR A6700sc camera works seamlessly with FLIR ResearchIR Max software enabling intuitive viewing, recording and advanced processing of the thermal data provided by the camera. A Software Developers Kit (SDK) is optionally available.

COMPATIBLE WITH 3RD PARTY SOFTWARE

Control the A6700sc and capture data directly into MathWorks® MATLAB software for custom image analysis and enhancement.

KEY FEATURES

- FLIR BUILT CRYO COOLER AND INSB DETECTOR
- EXCELLENT IMAGE QUALITY: 640 X 512 PIXELS
- HIGH SENSITIVITY: <20 MK
- HIGH SPEED IMAGE ACQUISITION: UP TO 480 HZ
- SYNCHRONIZATION WITH OTHER INSTRUMENTS AND EVENTS
- WIDE CHOICE OF OPTICS & EXTENDER RINGS



Electronics microscopy



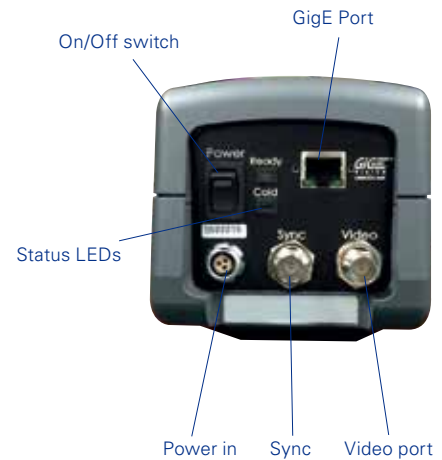
Motorcycle brake testing

GigE VISION GEN<i>CAM

MathWorks

Imaging Specifications

System Overview		FLIR A6700sc	
Detector Type	FLIR Indium Antimonide (InSb)		
Spectral Range	3 – 5 µm or 1 - 5 µm		
Resolution	640 × 512		
Detector Pitch	15 µm		
NETD	<20 mK (18 mk typical)		
Well Capacity	7.2 M electrons		
Operability	>99.8% (>99.95% typical)		
Sensor Cooling	FLIR Closed Cycle Rotary		
Electronics / Imaging			
Readout	Snapshot		
Readout Modes	Asynchronous Integrate While Read; Asynchronous Integrate Then Read		
Synchronization Modes	Frame Sync		
Integration Time	480 ns to 687 sec		
Subwindow Modes	Full, 1/2 or 1/4 Window		
Max Frame Rate	60Hz @ Full Window 240Hz @ 1/2 Window 480 Hz @ 1/4 Window		
Dynamic Range	14-bit		
Digital Data Protocol	Gigabit Ethernet (GigE Vision 2.0)		
Analog Video	NTSC, PAL		
Camera Control	GenICam		
Measurement			
Standard Temperature Range	-20°C to 350°C (-4°F to 662°F)		
Optional Temperature Range	Up to 1,500°C (2,732°F) Up to 2,000°C (3,632°F)		
Accuracy	± 2°C or ±2% of reading		
Optics			
f/#	f/4.0 or f/2.5		
Available Lenses	3-5µm: 13mm, 13mm (low distortion), 25mm, 50mm, 100mm (all lenses are f/2.5) 1-5µm: 25mm, 50mm, 100mm (lenses are f/2.5)		
Microscopes	1x (this lens is f/4 and requires an f/4 camera)		
Focus	Manual		
Filtering	Removable Behind the Lens or Permanent "cold" Filter Available		
Analog Video			
Analog Palettes	Selectable 8-bit		
AGC	Manual, Linear, Plateau Equalization, DDE		
Digital Zoom	Video Zoom is Auto Selected: 1x for Full and 1/2 window, 2x for 1/4 window		
General			
Operating Temperature Range	-40°C to 50°C (-40°F to 122°F)		
Storage Temperature Range	-55°C to 80°C (-67°F to 176°F)		
Altitude	0 to 10,000 Feet Operational; 0 to 70,000 Feet Non-Operational		
Shock / Vibration	40 g , 11 msec ½ sine pulse / 4.3 g RMS Random Vibration, All 3 Axis		
Power	24 VDC (< 50 W steady state)		
Weight w/o Lens	5 lbs / 2,3 kg		
Size (L × W × H) w/o Lens	8.5 × 4.0 × 4.3" / 21.6 × 10.2 × 10.9cm		
Mounting	2 × ¼"-20, 1 × 3/8" – 16, 4 × 10/24		



PORTLAND
Corporate Headquarters
FLIR Systems, Inc.
27700 SW Parkway Ave.
Wilsonville, OR 97070
USA
PH: +1 866.477.3687

BELGIUM
FLIR Systems Trading
Belgium BVBA
Luxemburgstraat 2
2321 Meer
Belgium
PH: +32 (0) 3665 5100

SWEDEN
FLIR Systems AB
Antennvägen 6,
PO Box 7376
SE-187 66 Täby
Sweden
PH: +46 (0)8 753 25 00

www.flir.com
NASDAQ: FLIR

Specifications are subject to change without notice
©Copyright 2014, FLIR Systems, Inc. All other brand and product names are trademarks of their respective owners. The images displayed may not be representative of the actual resolution of the camera shown. Images for illustrative purposes only. (Created 08/14)

NASHUA
FLIR Systems, Inc.
9 Townsend West
Nashua, NH 06063
USA
PH: +1 603.324.7611

UK
FLIR Systems UK
2 Kings Hill Avenue
Kings Hill
West Malling - Kent
ME19 4AQ
United Kingdom
PH: +44 (0)1732 220 011